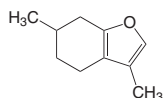


## Menthofuran



$C_{10}H_{14}O$  · D 0,97 g/cm<sup>3</sup> · bp 210 °C · flp 76 °C  
M 150,22 g/mol  
CAS No. 494-90-6 · EC no. 207-795-5  
WGK 2

### Menthofuran ROTICHROM® GC

Reference substance for GC.

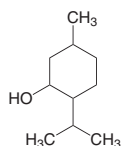
Storage temperature: +4 °C

#### Type analysis

Purity (GC) ..... ≥90 %

| Art. No. | Pack Qty. | Pack. |
|----------|-----------|-------|
| 5188.2   | 100 mg    | glass |

## Menthol



Hexahydrothymol  
 $C_{10}H_{20}O$  · D 0,89 g/cm<sup>3</sup> · mp 30 to 32 °C ·  
bp 212 °C · flp 93 °C  
M 156,27 g/mol  
CAS No. 89-78-1 · EC no. 201-939-0  
WGK 1

⚠ Warning H315-H319

### Menthol Chinese

#### Type analysis

Appearance ..... white crystals  
Specific rotation  $[\alpha]^{20}_D$  ..... -46° to -38°

| Art. No. | Pack Qty. | Pack. |
|----------|-----------|-------|
| 6725.1   | 250 g     | glass |

## DL-Menthol

Hexahydrothymol  
 $C_{10}H_{20}O$  · D 0,89 g/cm<sup>3</sup> · mp 30 to 32 °C ·  
bp 212 °C · flp 93 °C  
M 156,27 g/mol  
CAS No. 89-78-1 · EC no. 201-939-0  
WGK 1

⚠ Warning H315-H319

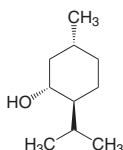
### DL-Menthol ≥98 %, synthetic

#### Type analysis

Appearance ..... colourless to white crystalline mass  
Assay (GLC) ..... ≥98 %  
Melting point ..... 30,5-32,0 °C  
Specific rotation  $[\alpha]^{20}_D$  (in ethanol) ..... -2° to +2°

| Art. No. | Pack Qty. | Pack. |
|----------|-----------|-------|
| 8391.1   | 100 g     | glass |

## (-)-Menthol



$C_{10}H_{20}O$  · D 0,89 g/cm<sup>3</sup> · mp 40 to 45 °C ·  
bp 210 to 220 °C · flp 93 °C  
M 156,27 g/mol  
CAS No. 2216-51-5 · EC no. 218-690-9  
WGK 1

⚠ Warning H315-H319

### (-)-Menthol ROTICHROM® GC

Reference substance for GC.

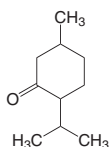
Storage temperature: +4 °C

#### Type analysis

Purity (GC) ..... ≥95 %

| Art. No. | Pack Qty. | Pack.   |
|----------|-----------|---------|
| 9061.1   | 1 g       | plastic |

## Menthone



$C_{10}H_{18}O$  · D 0,896 g/cm<sup>3</sup> · mp -6 °C · bp 207 °C ·  
flp 69 °C  
M 154,25 g/mol  
CAS No. 10458-14-7 · EC no. 233-944-9  
WGK 1

⚠ ⚡ Danger H302-H319-H334-H412

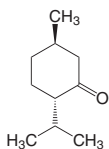
### Menthone ≥96 %, mixture of isomers

#### Type analysis

Appearance ..... light yellow clear liquid  
Assay ..... ≥96,0 %

| Art. No. | Pack Qty. | Pack. |
|----------|-----------|-------|
| 4226.1   | 50 ml     | glass |
| 4226.2   | 250 ml    | glass |

## (-)-Menthone



p-Menthan-3-one  
 $C_{10}H_{18}O$  · D 0,893 g/cm<sup>3</sup> · mp -20 °C ·  
bp 210,7 °C · flp 74 °C  
M 154,25 g/mol  
CAS No. 14073-97-3 · EC no. 237-926-1  
WGK 1

⚠ Warning H315-H317

## (-)-Menthone

ROTICHROM® CHR ≥88 %

Storage temperature: +4 °C

#### Type analysis

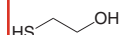
Appearance ..... colourless liquid  
Assay (GC) ..... ≥88,0 %  
Optical rotation (20 °C) ..... -30° to -20°

| Art. No. | Pack Qty. | Pack. |
|----------|-----------|-------|
| 6930.1   | 25 ml     | glass |

## Menthyl acetate

► Acetic acid (L)-menthyl ester see page 10

## 2-Mercaptoethanol



β-Mercaptoethanol · Hydroxyethyl mercaptan ·  
Thioethyleneglycol · Thioglycol · BME  
 $C_2H_5OS$  · D 1,12 g/cm<sup>3</sup> · mp -50 °C ·  
bp 155,8 °C · flp 68,3 °C  
M 78,13 g/mol  
CAS No. 60-24-2 · EC no. 200-464-6  
UN no. 2966 · ADR 6.1 II · WGK 3

⚠ ⚡ ⚠ ⚠ ⚠ Danger H301+H331-H310-  
H315-H317-H318-H373-H410

### 2-Mercaptoethanol ≥99 %, p.a.

Reducing agent.

Storage temperature: +4 °C

#### Type analysis

Appearance ..... colourless to slightly pink liquid  
Assay ..... ≥99 %

| Art. No. | Pack Qty. | Pack. |
|----------|-----------|-------|
| 4227.3   | 100 ml    | glass |
| 4227.1   | 250 ml    | glass |
| 4227.2   | 1 l       | glass |

## β-Mercaptoethanol

► 2-Mercaptoethanol see page 412

## 2-Mercaptoethylamine hydrochloride

► Cysteamine hydrochloride see page 190

## Mercury

Hg · D 13,55 g/cm<sup>3</sup> · mp -38,48 °C ·  
bp 356,8 °C  
M 200,59 g/mol  
CAS No. 7439-97-6 · EC no. 231-106-7  
UN no. 2809 · ADR 8 (6.1) III · WGK 3

⚠ ⚡ ⚠ ⚠ ⚠ Danger H330-H360D-  
H372-H410

## Mercury

≥99,9995 %, p.a.

#### Guarantee analysis

Assay ..... ≥99,9995 %  
Aluminium (Al) ..... ≤0,00001 %  
Lead (Pb) ..... ≤0,00001 %  
Silver (Ag) ..... ≤0,00001 %  
Magnesium (Mg) ..... ≤0,00001 %  
Copper (Cu) ..... ≤0,00001 %